


SCALE BAR
 0 500 1,000 1,500 2,000 2,500 m
 1:40,000 (A3)



KEY
 Operational Air Quality Study

Mapping reproduced by permission of Ordnance Survey on behalf of HMSO.
 © Crown copyright and database rights 2017. All rights reserved.
 Ordnance Survey licence number 100023395
 Contains OS data © Crown copyright and database rights 2017.

REVISION	DRAWN	CHECKED	APPROVED	DATE



PROJECT TITLE
 Lake Lothing
THIRD CROSSING

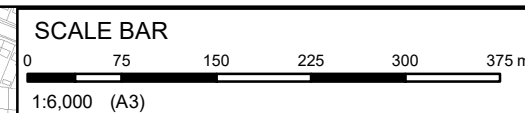
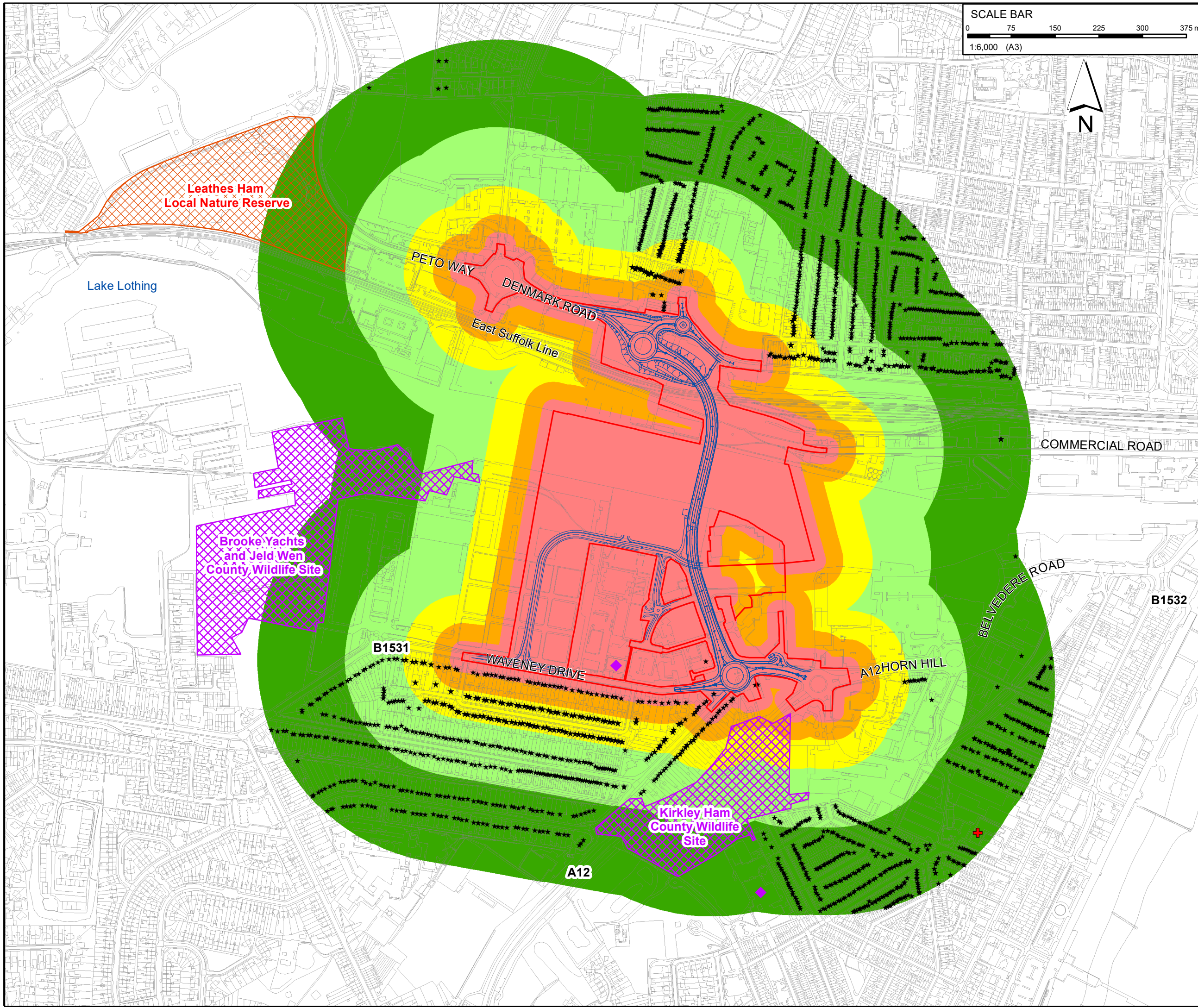
DRAWING TITLE
 Operational Air Quality Study Area
 Regulation 5(2)(a)
 Figure 8.1

DRAWING STATUS
 For DCO Submission

DRAWN	CHECKED	APPROVED	AUTHORISED	SUITABILITY
IW	HR	HR	JB	S4

SCALE @ A3 SIZE	DATE	REVISION
1:40,000	19/06/2018	P00

DRAWING NUMBER			
Project	Originator	Volume	
1069948-WSP-EAQ-LL-SK-LE-0001			
Location	Type	Role	Number



KEY

- Order Limits
- The Scheme (illustrative)

Distance from Construction Boundary

- 20m from Construction Boundary
- 50m from Construction Boundary
- 100m from Construction Boundary
- 200m from Construction Boundary
- 350m from Construction Boundary

Sensitive Receptors

- ★ Residential
- ◆ Educational
- + Health

Ecological Receptors

- County Wildlife Site
- Leathes Ham Local Nature Reserve

Mapping reproduced by permission of Ordnance Survey on behalf of HMSO.
 © Crown copyright and database rights 2017. All rights reserved.
 Ordnance Survey licence number 100023395
 Contains OS data © Crown copyright and database rights 2017.

FOR DCO SUBMISSION				
REVISION	DRAWN	CHECKED	APPROVED	DATE
DESCRIPTION				



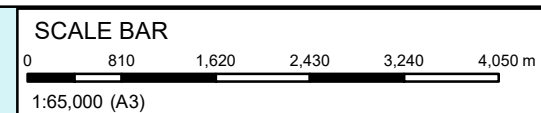
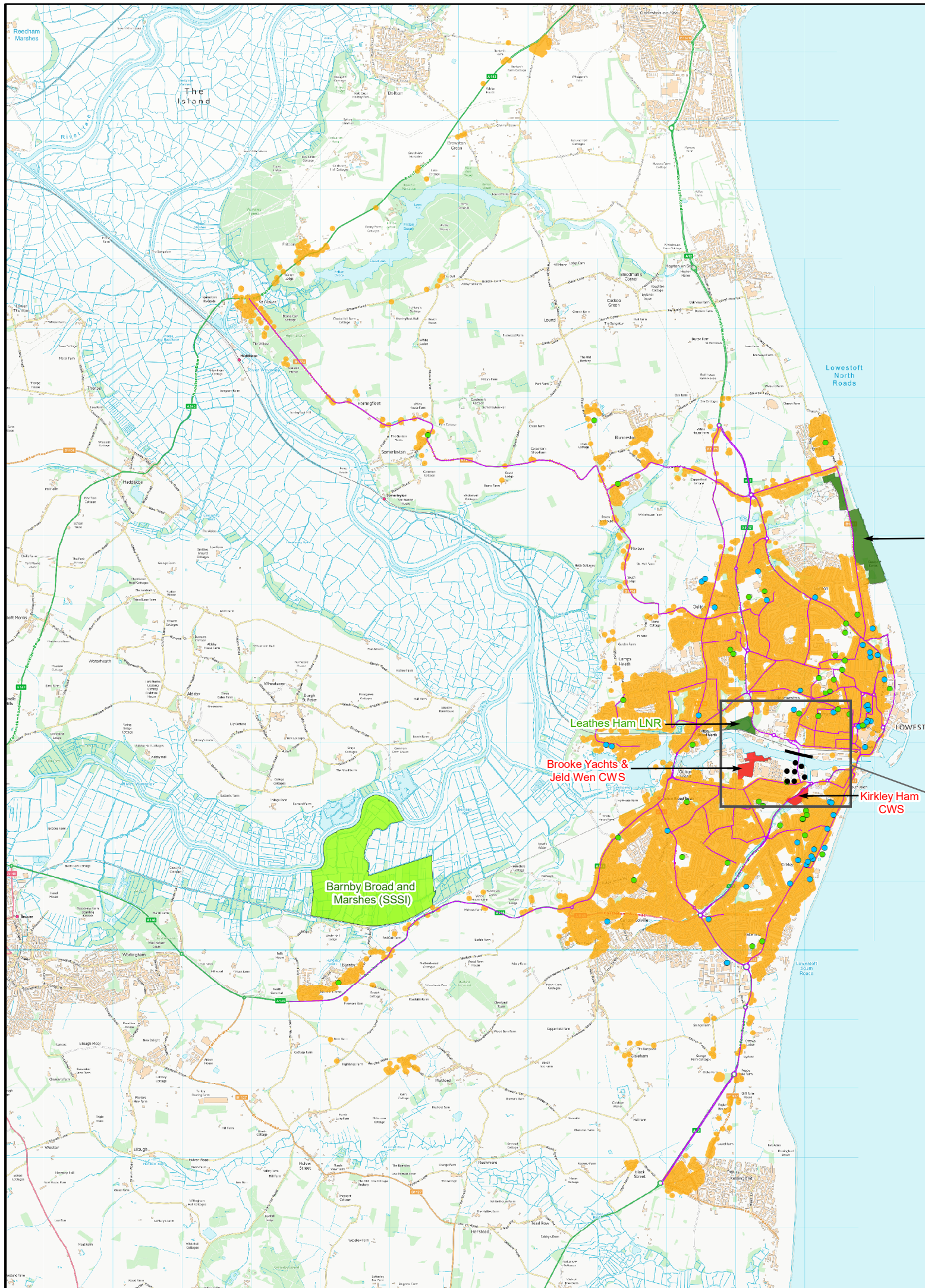
PROJECT TITLE
 Lake Lothing
THIRD CROSSING

DRAWING TITLE
 Air Quality Construction Phase
 Assessment Study Area
 Regulation 5(2)(a)
 Figure 8.2

DRAWING STATUS
 For DCO Submission

DRAWN	CHECKED	APPROVED	AUTHORISED	SUITABILITY
IW	HR	HR	JB	S4
SCALE @ A3 SIZE		DATE	REVISION	
1:6,000		20/06/2018	P00	

DRAWING NUMBER				
Project	Originator	Volume		
1069948-WSP-EAQ-LL-SK-LE-0002				
Location	Type	Role	Number	



- KEY**
- Local Air Quality Affected Roads
 - Additional Receptors
 - ABP Operations
- Sensitive Receptors**
- Residential
 - Health
 - Educational
- Ecological Receptors**
- Designated Ecological Sites
- Ecological sites**
- Local Nature Reserve (LNR)
 - County Wildlife Site (CWS)

Mapping reproduced by permission of Ordnance Survey on behalf of HMSO.
 © Crown copyright and database rights 2017. All rights reserved.
 Ordnance Survey licence number 100023395
 Contains OS data © Crown copyright and database rights 2017.

REVISION	DRAWN	CHECKED	APPROVED	DATE



PROJECT TITLE
 Lake Lothing
THIRD CROSSING

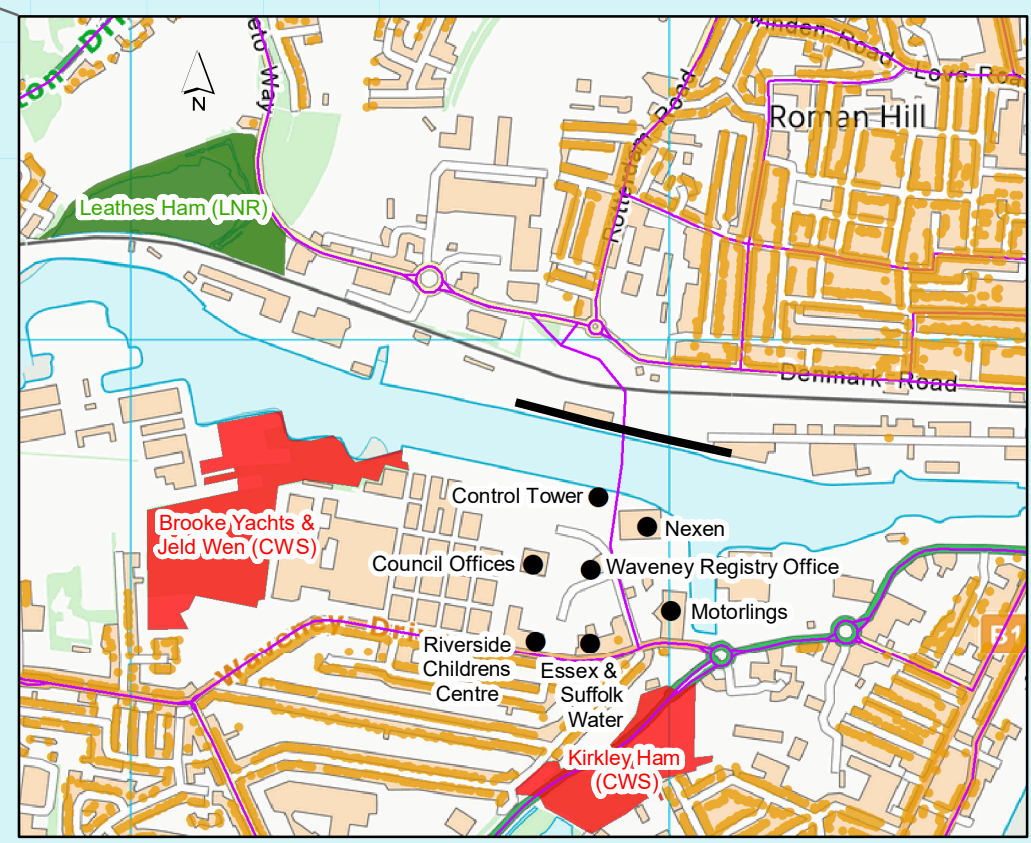
DRAWING TITLE
 Local Air Quality Assessment
 Study Area
 Regulation 5(2)(p)
 Figure 8.3

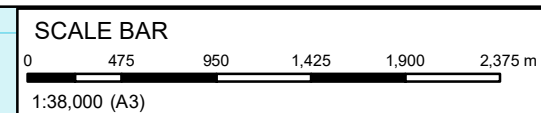
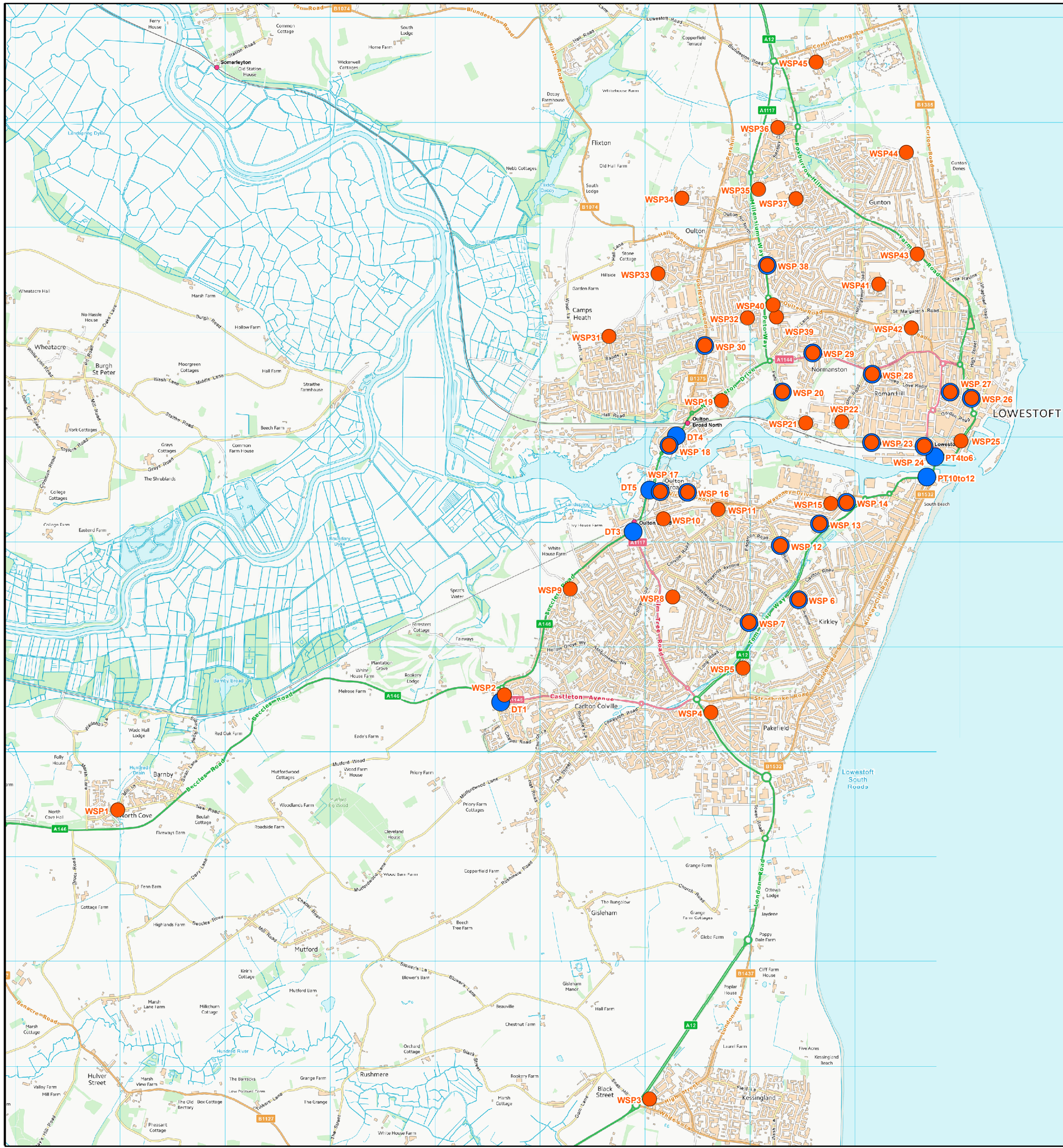
DRAWING STATUS
 For DCO Submission

DRAWN	CHECKED	APPROVED	AUTHORISED	SUITABILITY
IW	HR	HR	JB	S4

SCALE @ A3 SIZE	DATE	REVISION
1:65,000	15/06/2018	P00

DRAWING NUMBER		
Project	Originator	Volume
1069948-WSP-EAQ-LL-SK-LE-0003		
Location	Type	Role





KEY

- Scheme Specific Monitoring Location
- Monitoring Locations Used for Model Verification

Mapping reproduced by permission of Ordnance Survey on behalf of HMSO.
 © Crown copyright and database rights 2017. All rights reserved.
 Ordnance Survey licence number 100023395
 Contains OS data © Crown copyright and database rights 2017.

REVISION	DRAWN	CHECKED	APPROVED	DATE



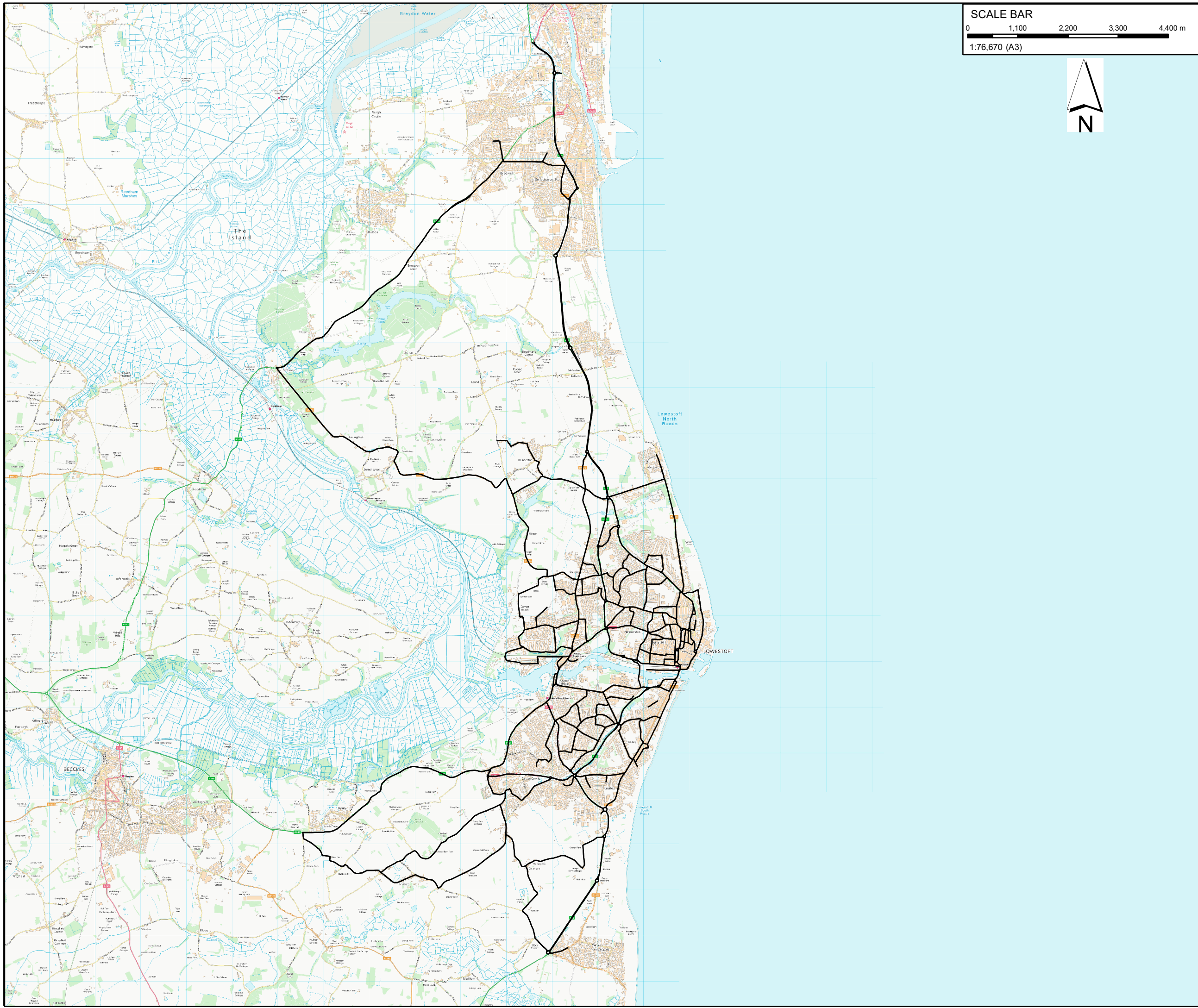
PROJECT TITLE
 Lake Lothing
THIRD CROSSING

DRAWING TITLE
 Air Quality Monitoring Locations
 Regulation 5(2)(a)
 Figure 8.4

DRAWING STATUS
 For DCO Submission

DRAWN	CHECKED	APPROVED	AUTHORISED	SUITABILITY
IW	HR	HR	JB	S4
SCALE @ A3 SIZE		DATE	REVISION	
1:38,000		20/06/2018	P00	

DRAWING NUMBER				
Project	Originator	Volume		
1069948-WSP-EAQ-LL-SK-LE-0004				
Location	Type	Role	Number	



SCALE BAR
 0 1,100 2,200 3,300 4,400 m
 1:76,670 (A3)



KEY
 — Regional Affected Roads

Mapping reproduced by permission of Ordnance Survey on behalf of HMSO.
 © Crown copyright and database rights 2017. All rights reserved.
 Ordnance Survey licence number 100023395
 Contains OS data © Crown copyright and database rights 2017.

REVISION	DRAWN	CHECKED	APPROVED	DATE
DESCRIPTION				



PROJECT TITLE

 Lake Lothing
THIRD CROSSING

DRAWING TITLE
 Regional Affected Roads
 Regulation 5(2)(a)
 Figure 8.5

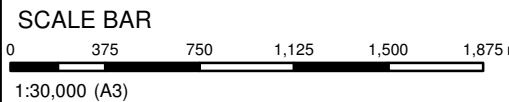
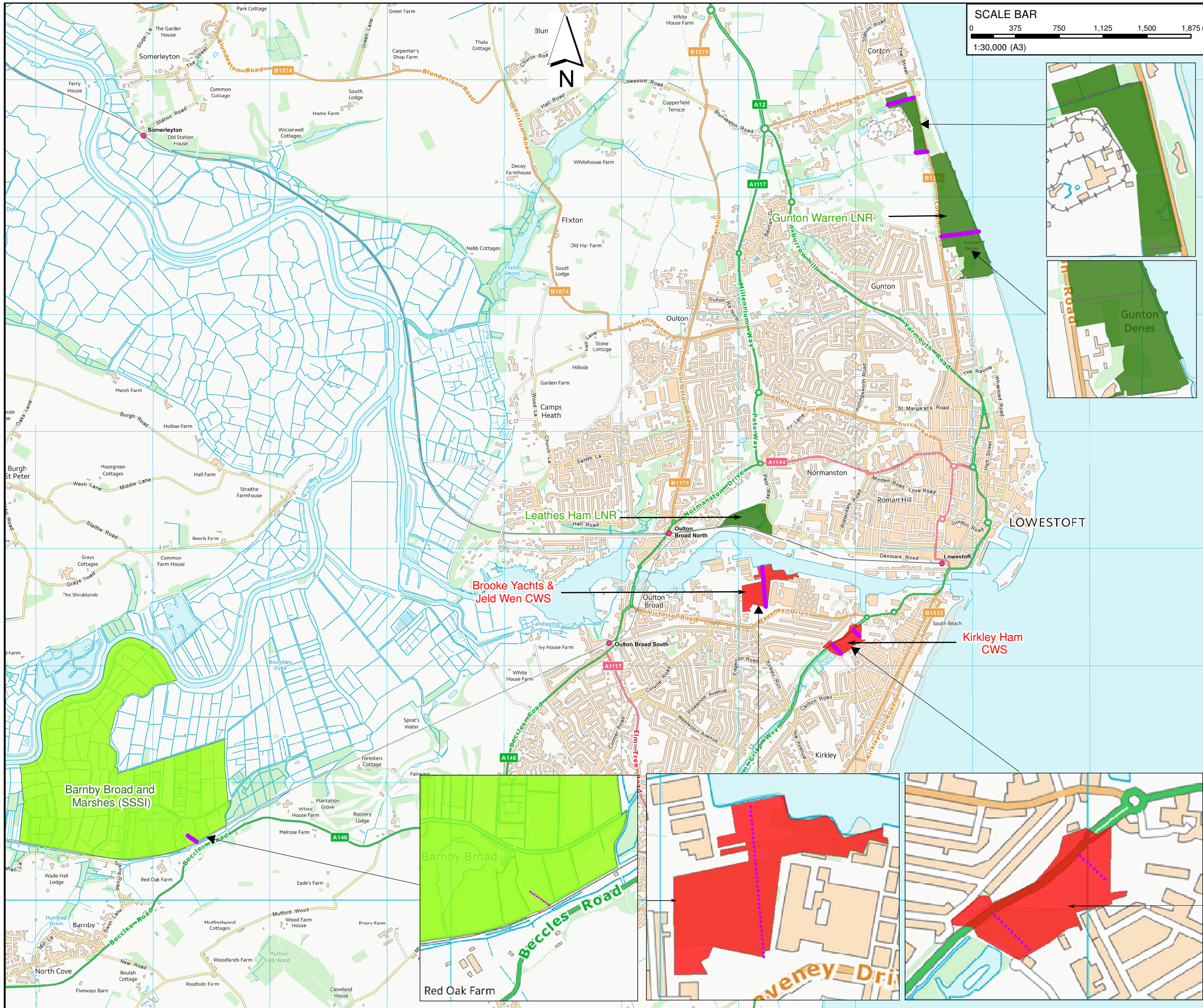
DRAWING STATUS
 For DCO Submission

DRAWN	CHECKED	APPROVED	AUTHORISED	SUITABILITY
IW	HR	HR	JB	S4

SCALE @ A3 SIZE	DATE	REVISION
1:76,669.55	20/06/2018	P00

DRAWING NUMBER

Project	Originator	Volume	
1069948-WSP-EAQ-LL-SK-LE-0017			
Location	Type	Role	Number



- KEY**
- Ecological Assessment Transects
 - Ecological Receptors**
 - Designated Ecological Sites
 - Ecological sites**
 - Local Nature Reserve (LNR)
 - County Wildlife Site (CWS)



Mapping reproduced by permission of Ordnance Survey on behalf of HMSO.
 © Crown copyright and database rights 2017. All rights reserved.
 Ordnance Survey licence number 100023395
 Contains OS data © Crown copyright and database rights 2017.

REVISION	DRAWN	CHECKED	APPROVED	DATE



PROJECT TITLE
 Lake Lothing
THIRD CROSSING

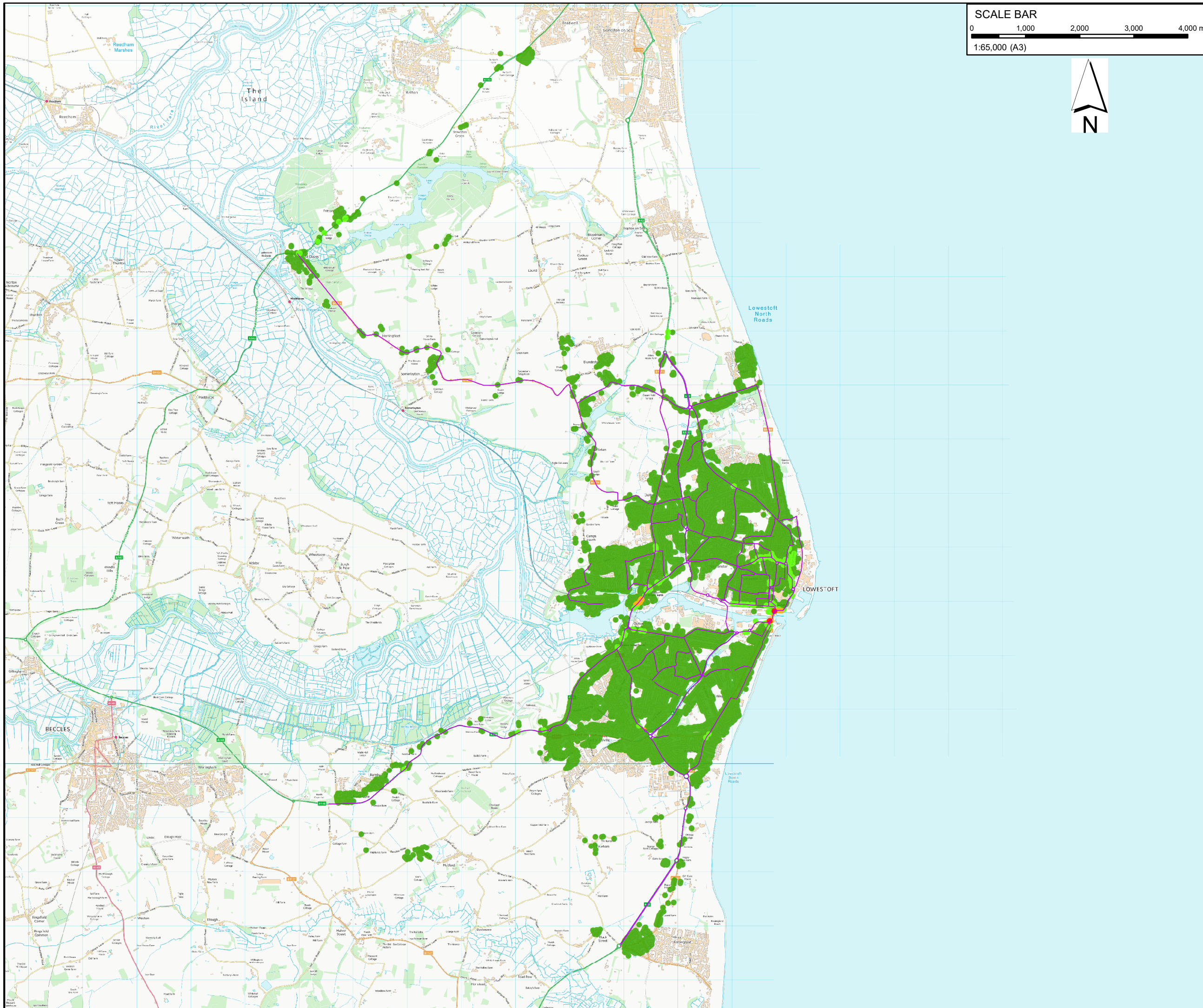
DRAWING TITLE
 Ecological Assessment Study Area
 Regulation 5(2)(p)
 Figure 8.6

DRAWING STATUS
 For DCO Submission

DRAWN	CHECKED	APPROVED	AUTHORISED	SUITABILITY
IW	HR	HR	JB	S4

SCALE @ A3 SIZE	DATE	REVISION
1:30,000	22/06/2018	P00

DRAWING NUMBER			
Project	Originator	Volume	
1069948-WSP-EAQ-LL-SK-LE-0018			
Location	Type	Role	Number



SCALE BAR
 0 1,000 2,000 3,000 4,000 m
 1:65,000 (A3)



KEY
 Local Air Quality Affected Roads
2016 Annual Mean NO₂ Concentration (µg/m³)
 ● <20
 ● 20 to 30
 ● 30 to 40
 ● >40

Mapping reproduced by permission of Ordnance Survey on behalf of HMSO.
 © Crown copyright and database rights 2017. All rights reserved.
 Ordnance Survey licence number 100023395
 Contains OS data © Crown copyright and database rights 2017.

REVISION	DRAWN	CHECKED	APPROVED	DATE
DESCRIPTION				



PROJECT TITLE
 Lake Lothing
THIRD CROSSING

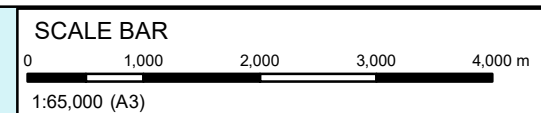
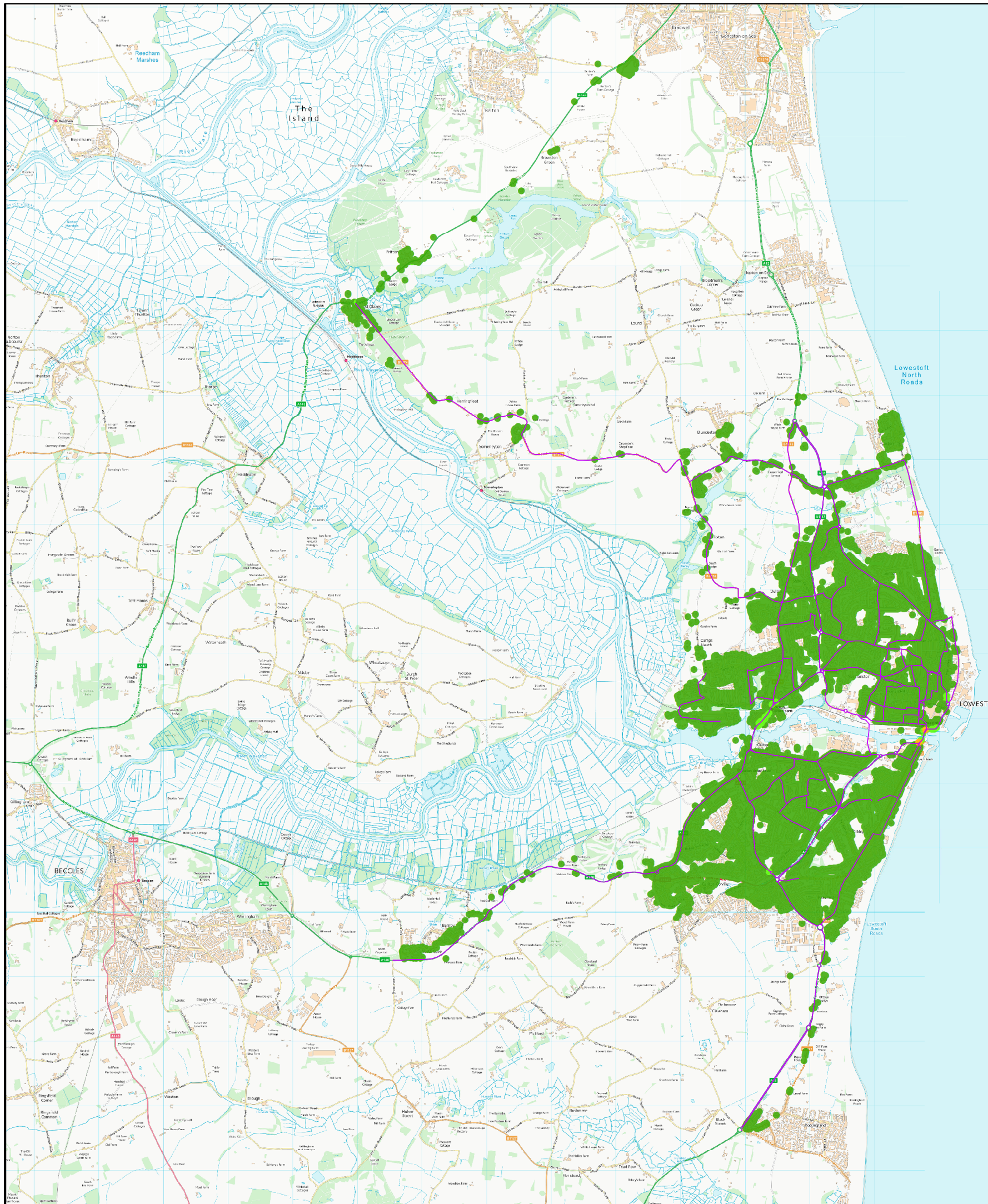
DRAWING TITLE
 Local Air Quality Assessment NO₂
 Results 2016 Base Year Scenario
 Regulation 5(2)(a)
 Figure 8.7

DRAWING STATUS
 For DCO Submission

DRAWN	CHECKED	APPROVED	AUTHORISED	SUITABILITY
IW	HR	HR	JB	S4

SCALE @ A3 SIZE	DATE	REVISION
1:65,000	20/06/2018	P00

DRAWING NUMBER			
Project	Originator	Volume	
1069948-WSP-EAQ-LL-SK-LE-0014			
Location	Type	Role	Number



KEY

Local Air Quality Affected Roads

2022 Annual Mean NO₂ Concentration (µg/m³)

NO₂

- <20
- 20 to 30
- 30 to 40
- >40

Mapping reproduced by permission of Ordnance Survey on behalf of HMSO.
 © Crown copyright and database rights 2017. All rights reserved.
 Ordnance Survey licence number 100023395
 Contains OS data © Crown copyright and database rights 2017.

REVISION	DRAWN	CHECKED	APPROVED	DATE
DESCRIPTION				



PROJECT TITLE

Lake Lothing
THIRD CROSSING

DRAWING TITLE

Local Air Quality Assessment NO₂
 Results 2022 Do Minimum Scenario
 Regulation 5(2)(a)
 Figure 8.8

DRAWING STATUS

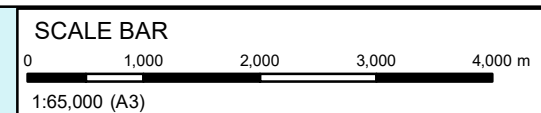
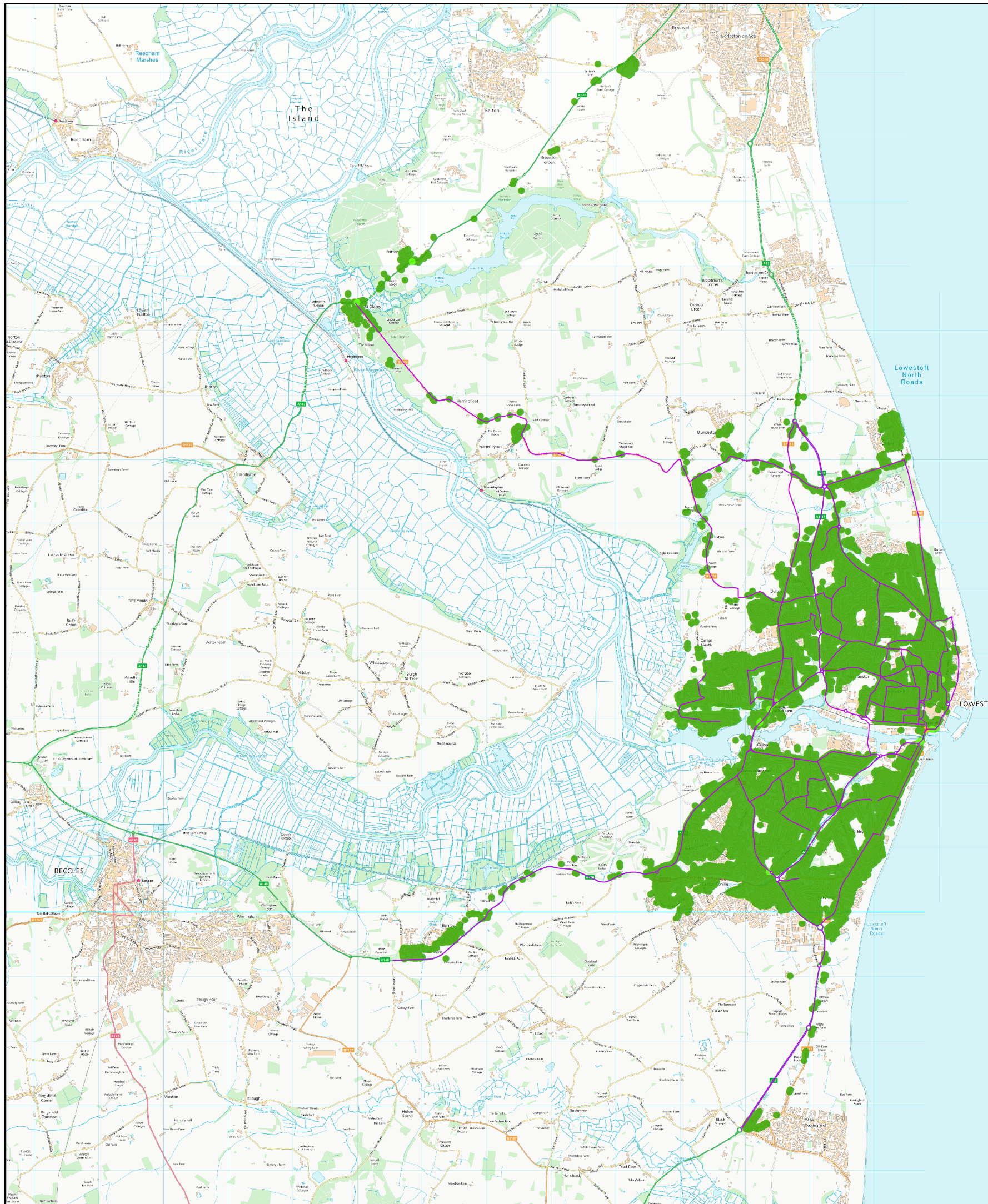
For DCO Submission

DRAWN	CHECKED	APPROVED	AUTHORISED	SUITABILITY
IW	HR	HR	JB	S4

SCALE @ A3 SIZE	DATE	REVISION
1:65,000	20/06/2018	P00

DRAWING NUMBER

Project	Originator	Volume	
1069948-WSP-EAQ-LL-SK-LE-0008			
Location	Type	Role	Number



KEY

- Local Air Quality Affected Roads

2022 Annual Mean NO₂ Concentration (µg/m³)

- <20
- 20 to 30
- 30 to 40
- >40

Mapping reproduced by permission of Ordnance Survey on behalf of HMSO.
 © Crown copyright and database rights 2017. All rights reserved.
 Ordnance Survey licence number 100023395
 Contains OS data © Crown copyright and database rights 2017.

REVISION	DRAWN	CHECKED	APPROVED	DATE
DESCRIPTION				



PROJECT TITLE
 Lake Lothing
THIRD CROSSING

DRAWING TITLE
 Local Air Quality Assessment NO₂
 Results 2022 Do Something Scenario
 Regulation 5(2)(a)
 Figure 8.9

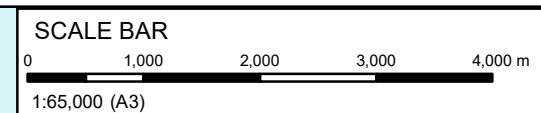
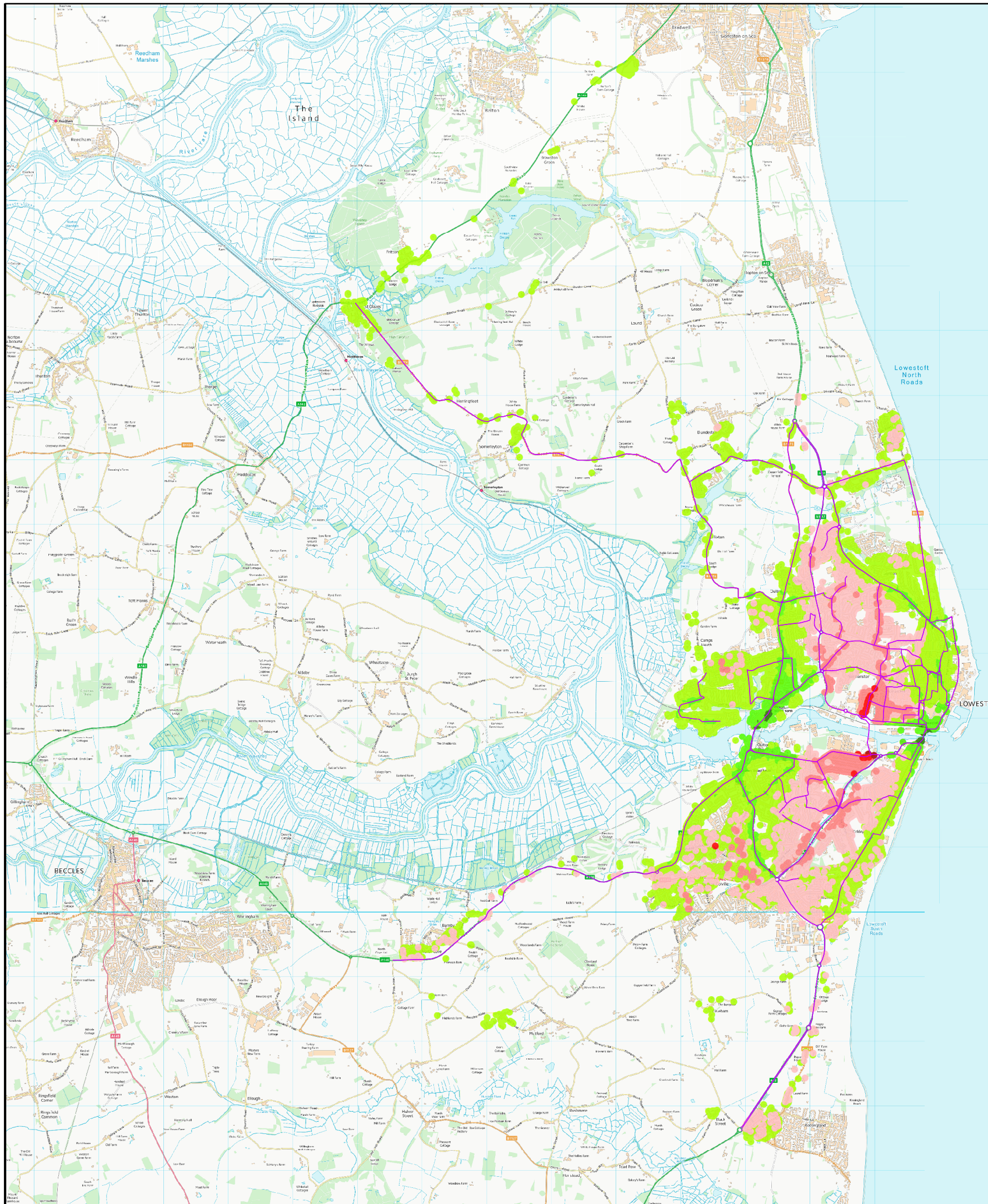
DRAWING STATUS
 For DCO Submission

DRAWN	CHECKED	APPROVED	AUTHORISED	SUITABILITY
IW	HR	HR	JB	S4

SCALE @ A3 SIZE	DATE	REVISION
1:65,000	20/06/2018	P00

DRAWING NUMBER

Project	Originator	Volume	
1069948-WSP-EAQ-LL-SK-LE-0011			
Location	Type	Role	Number



KEY

Local Air Quality Affected Roads

2022 Change in Annual Mean NO₂ Concentration DS-DM (µg/m³)

- <-4
- -2 to -4
- -0.4 to -2
- 0 to -0.4
- 0
- 0 to 0.4
- 0.4 to 2
- 2 to 4
- >4

Mapping reproduced by permission of Ordnance Survey on behalf of HMSO.
 © Crown copyright and database rights 2017. All rights reserved.
 Ordnance Survey licence number 100023395
 Contains OS data © Crown copyright and database rights 2017.

REVISION	DRAWN	CHECKED	APPROVED	DATE
DESCRIPTION				



PROJECT TITLE
 Lake Lothing
THIRD CROSSING

DRAWING TITLE
 Local Air Quality Assessment NO₂ Change
 Between Do Minimum and Do Something Scenario
 Regulation 5(2)(a)
 Figure 8.10

DRAWING STATUS
 For DCO Submission

DRAWN	CHECKED	APPROVED	AUTHORISED	SUITABILITY
IW	HR	HR	JB	S4

SCALE @ A3 SIZE	DATE	REVISION
1:65,000	20/06/2018	P00

DRAWING NUMBER

Project	Originator	Volume	
1069948-WSP-EAQ-LL-SK-LE-0005			
Location	Type	Role	Number